

For Continuation See Drawing WN-DCAI-011

WNDCAI 011

WNDCAI 010

SAFETY HEALTH AND ENVIRONMENT INFORMATION

IN ADDITION TO THE HAZARDS/RISKS NORMALLY ASSOCIATED WITH THE TYPES OF WORK DETAILED ON THIS DRAWING, NOTE THE FOLLOWING SIGNIFICANT RESIDUAL RISKS: -

CONSTRUCTION

- 132kV buried cables
- LV / HV cables running across creek near old bridge abutments
- Potentially unstable flood wall
- Concrete jetty structurally defective

ENVIRONMENTAL

- Japanese Knotweed present near site boundary
- Buried pumped sewage main crossing creek by old bridge abutments

MAINTENANCE/CLEANING/OPERATION

- Falls into deep mud
- Fast flowing water & changing water levels

DECOMMISSIONING/DEMOLITION

Planting Schedule: Dartford Creek

All plants: to be of local provenance and source of supply approved by landscape architect; should be planted in winter (Nov - Feb)

Trees	Size (Grth cm)	Type	Form	Overall Height	Clear stem	Girth at 1m	Total No.
Betula pubescens (silver birch)	10-12	RB	standard	3.00 - 3.50m	200cm	10-12cm	12
Salix fragilis (Crack willow)		BR	feathered	175-200mm			6

Marginal Planting	Size	%	Density No./m ²	Quantity	Quantity	Quantity	Quantity	Quantity	Quantity	Total No.						
Phragmites australis (common reed)	7cm root trainers	100	7/m ²	Area 1: 109m ²	763	Area 2: 544m ²	3808	Area 3: 351m ²	2457	Area 4: 288m ²	2016	Area 5: 183m ²	1281	Area 6: 124m ²	868	11193

Climbers Mix:	Size	Type	Overall Height	Density No./L m	% of Mix	Quantity
Hedera helix (ivy)	2L	CG	750cm	2/ linear m	50%	141
Lonicera periclymenum (honeysuckle)	2L	CG	750cm	2/ linear m	50%	141

Grass Seed Mix:

Supplier: Must be of local provenance source of supply to be approved by Landscape Architect.

Seed mix: Wildflower Mixture (20% Flowers 80% Grasses) MODIFIED to include Species:

Wild Flowers 1 part 20%			Grasses 4 parts 80%		
Common name	Species	%	Common name	Species	%
Common fleabane	Pulicaria dysenterica	4	Crested dogstail	Cynosurus cristatus	18
Gypsy wart	Lycopus europaeus	8	Meadow foxtail	Alcecurus pratensis	9
Greater birdfoot trefoil	Lotus uliginosus	8	Rough meadow grass	Poa trivialis	7
Hemp agrimony	Eupatorium cannabinum	5	Sheeps fescue	Festuca ovina	32
Marsh marigold	Caltha palustris	4	Sweet vernal	Anthoxanthium odoratum	4
Marsh woundwort	Stachys palustris	10	Tufted hairgrass	E. schampisia caespitosa	12
Meadow sweet	Filipendula ulmaria	17	Red fescue	Festuca rubra	10
Purple loosestrife	Lythrum salicaria	6	Perennial rye grass	Lolium perenne	8
Ragged robin	Lychnis flos-cuculi	11			100
Square stemmed St. John's Wort	Hypericum tetrapterum	7			
Yellow flag iris	Iris pseudacorus	20			
		100			

Sowing rates g/m²

Area A: 795m ²	Area B: 343m ²	Area C: 229m ²	Total Area: 1367m²
---------------------------	---------------------------	---------------------------	--------------------------------------

Notes:
Plants to be of local provenance & relevant certificates provided.
Each plant to be tied in 3 places on existing fence using garden twine & canes to be removed.

Notes

1. Precautionary approach to be taken to trees being felled. Any potential bat habitat (eg. trees with fissures, cracks, dense ivy) should be inspected by an ecologist.
2. Any vegetation potential for breeding bird habitat (especially vegetation 500mm high and above) should be inspected by an ecologist before work starts.
3. All plants to be of local provenance, sourced locally with all relevant certificates provided.
4. Planting and Other Landscaping Works to be maintained in accordance with section 3 of the particular landscape specification

Key

- (A) Remove concrete jetty/platform
- (B) Retain existing mud flats on east bank
- (C) Brushwood revetment planted with common reed
- (E) Tidy up existing vegetation in accordance with specification, to allow views through to river
- (F) Tree planting and climbers for screening
- (G) Wildflower mix at top of bank
- (H) West bank mud flats linked with new brushwood revetment where possible

- Concrete platform/jetty to be removed
- Wildflower mix
- Tidy up area (general maintenance)
- Brushwood revetment
- Bank reprofiled
- Existing mud flats retained
- Existing concrete flood wall retained
- Existing path
- Proposed tree planting (Silver birch)
- Trees to be removed
- Trees to be retained

Rev	By	Chkd	Apprvd	Date	Description
A	MVH	AT	RS	29/07/09	ISSUED FOR TENDER

Client: **SEEDA** SOUTH EAST ENGLAND DEVELOPMENT AGENCY
Working for England's World Class Region

Halcrow Group Limited
Rocfort Road, Shodland, Kent ME6 5AH
Tel: 01634 244114 Fax: 01634 244388
www.halcrow.com

Halcrow

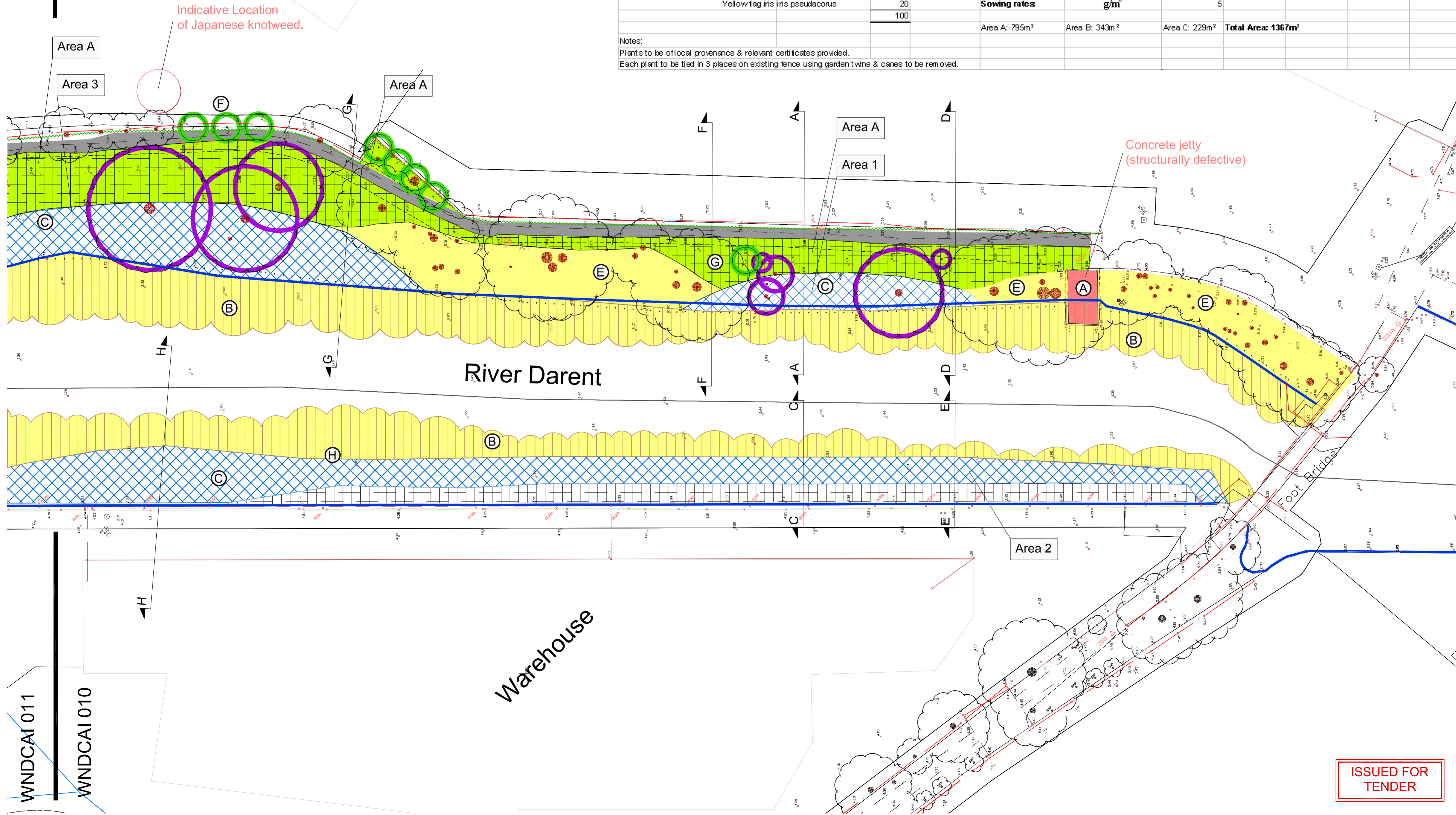
Project: Dartford Creek Access Improvements

Drawing: Landscape Design General Arrangement Sheet 1 of 3

Drawn by: MVH Date: 30-01-09
Checked by: DN Date: 30-01-09
Approved by: RS Date: 30-01-09

Drawing No. WNDCAI-010 Revision A

Drawing Scale: 1:250 @ A1 - 1:500 @ A3



ISSUED FOR TENDER