

# Dartford *Borough News*

JANUARY The Newspaper of Dartford Borough Council

[www.dartford.gov.uk](http://www.dartford.gov.uk)

# 2006

## The year Dartford takes off



**New Football Stadium**

**Bringing home the Darts**

**New Judo Club**

**International  
standard  
of excellence**



**Launch of The Bridge  
An innovation in design**

**and a whole lot more!**

● FREE BUS SCHEME EXTENDED ● SKATE PARK COMING SOON ●

# MY PATCH WILMINGTON

CONTINUING OUR SERIES OF COUNCILLOR PROFILES



## Derek Hunnisett Councillor for Wilmington ward

### *What made you stand for Election as a Councillor?*

A feeling that Wilmington was just drifting and losing its sense of village pride and residents concerns over ever increasing anti-social behaviour. I was brought up to believe that if you are unhappy about things then it is up to you to stand up, get involved, and try to influence the changes that are needed to improve matters, not just complain and leave it to others. Early retirement gave me that opportunity to put something back into Wilmington, the village that my family and I have had the privilege to live in for nearly 40 years.

### *What is the best thing about being a Councillor?*

Being able, with my fellow Wilmington Councillor Eddy Lampkin, to help

residents achieve and overcome problems. To ensure that needs of Wilmington are constantly kept at the top of the Council's Agenda; and being privilege to work with local organizations to assist the community in achieving its aims and ambitions.

### *What is the worst thing about being a Councillor?*

The paper, bureaucracy and regulation involved in local government that often restricts local people being able to decide local issues and causes delays and frustration in progressing the aims and objectives of the community.

### *What is good and bad about your area?*

One of the many good points about Wilmington is the community gets involved in supporting the aims and ambitions that we all have for our village. From simply litter picking to being involved in large community projects such as the Centre regeneration, the Wilmington fete or being key holders at one of our playgrounds. It is a great privilege to live in a community that still retains and takes a pride in its village identity.

However, this is spoilt by the litter, graffiti and the anti-social behaviour committed by a small element in our society which has a disproportionate impact on our lives.

### *What are your pet projects at the moment?*

The Village Centre Re-Generation project and the establishment of a Heritage Centre to display and maintain our rich cultural history of which Wilmington can justly be proud for future generations.

### *What law would you introduce if you were Prime Minister?*

Being charged with special responsibilities for community safety in Dartford I see the need to strengthen the law to support the Police and the Courts in bringing to justice those who try to endanger and break down the quality of the lives of normal law abiding citizens.

# Sign Post

## YOUR COUNCILLORS ARE:

BEAN & DARENTH	ARMITT Ian (Con) 01322 288396 BULL Simon (Con) 07764 488390 HAMMOCK David (Con) 01322 380058
BRENT	FICKLING Kenneth (Con) 020 8757 8128 KARAMUTH Sarah (Con) 07981 1614421 WIGHTMAN Nancy (Con) 01322 223586 EAST Sheila (Con) 01322 384677
CASTLE GREENHITHE	BROADLEY Conrad (Con) 01474 364088 FITZPATRICK Brian (RA&I) 07966 310805 MURPHY Martin (RA&I) 01322 370559
HEATH	LEADBEATER Kenneth (Con) 01322 866375 SMITH Terence (Con) 01322 220342 THURLOW Mrs Patsy (Con) 01322 862060
JOYCE GREEN	MUCKLE Ann (Lab) 01322 403229 BRYANT Matthew (Lab) 01322 271517
JOYDENS WOOD	ALLEN Mrs Ann (Con) 01322 270325 PETERS Marilyn (Con) 01322 554373
LITTLEBROOK	RICKWOOD Mrs Jennifer (Con) 01322 522361 MUCKLE John (Lab) 01322 403229
LONGFIELD NEW BARN AND SOUTHFLEET	TIBBY Michael (New England) 01322 279889 BASSAM Bertie (Con) 01474 704241 DUNN Alex (Con) 07941 241893 KITE Jeremy (Con) 01474 707380 BAKER Dave (Lab) 01322 271434
NEWTOWN	BROOKER Austen (New England) 01322 228943 STEELE Graham (Lab) 01322 277394
PRINCES	MAY David (Lab) 01322 228003 STOCK Margaret (Lab) 01322 223181 STOCK Vic (Lab) 01322 223181
STONE	JONES Bryan (Lab) 01322 343234 JONES Ivor (Lab) 01322 383361 LAWSON Derek (Lab) 01322 276624
SUTTON-AT-HONE & HAWLEY	COLEMAN Patrick (Con) 01322 863730 MARTIN Anthony (Con) 01322 272996
SWANSCOMBE	BOBBY Leslie (RA&I) 01322 384243 HAYES John (RA&I) 01322 387452 READ Bryan (RA&I) 01322 383895
TOWN	APPADOO Ram (Lab) 01322 408308 ROGERS Trevor (Lab) 01322 290455
WEST HILL	BYRNE Francis (Lab) 01322 401810 PROUT Geoff (Lab) 01322 275145
WILMINGTON	STOATE Mrs Deborah (Lab) 01322 343234 HUNNISETT Derek (Con) 01322 288397 LAMPKIN Eddy (Con) 07889 736598

Conservative 21, Labour 16, RA&I 5, New England 2

## Get connected become an E-citizen

Find out what you're missing  
visit [www.dartford.gov.uk](http://www.dartford.gov.uk) to register

## USEFUL TELEPHONE NUMBERS

MAIN SWITCHBOARD	(01322) 343434	ARTS DEVELOPMENT	(01322) 343351
BENEFITS	(01322) 343705	MUSEUM	(01322) 224739
COUNCIL TAX	(01322) 343700	HALL BOOKINGS	(01322) 343079
HOUSING	(01322) 343624	SPORTS DEVELOPMENT	(01322) 343524
ENV. HEALTH SERVICES	(01322) 343374	BUILDING CONTROL	(01322) 343238
REFUSE & RECYCLING	(01322) 343290	HIGHWAY REPAIRS	(08458) 247800
PLANNING	(01322) 343203	STREET LIGHTING	(08458) 247800
FLY TIPPING	(01322) 343290	DARTFORD POLICE	(01322) 280055
TRAVELLER SITES	(01322) 343684	CITIZENS ADVICE	(01322) 224686

# 2006 BRINGS EXCITING TIMES FOR DARTFORD

Welcome to the first edition of Dartford Borough News for 2006.

This year is going to be very special for the borough because so many thrilling and long awaited projects will be completed, and services for residents will continue to be improved.

The corporate vision for the Council is "to make Dartford the place of choice, where people choose to live, work and enjoy their leisure time". This is a bold vision yet so much is happening during 2006 that we will be taking a leap towards achieving this aim during the year.

Over the next four pages you can read about the developments that will make a real difference for you and your families, and will ensure Dartford is being talked about for all the right reasons.

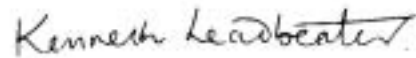
All of these new developments are planned to improve the quality of life in the borough, and to offer more for residents and visitors, in terms of facilities and services, so that Dartford can continue to become a fantastic place to live in and visit.

Change isn't easy and there will always be some who want to hide away from the problems that the Borough has, but this Council is different. We will tackle problems and challenges

head-on and we will also take the difficult decisions that the borough needs taking. Although we are a small town and a small borough we have a tremendous opportunity over the next few years and we should make the most of it now.

These are truly exciting times for Dartford and I am proud to be Leader of a Council that is doing so much to make a difference for the residents of the borough.

If you have views about these exciting projects, or if you want to be kept informed about specific activities, please feel free to email me at [theleader@dartford.gov.uk](mailto:theleader@dartford.gov.uk) or write to me at the Civic Centre, Home Gardens, Dartford, Kent DA1 1DR.



Kenneth Leadbeater  
Leader, Dartford Borough Council



## FREE bus travel for over-60s

You asked – we deliver

Over 60s will get a great surprise from April when bus services across the county become free – thanks to Dartford Borough Council.

The new fare will cover all journeys that start or finish in the county – offering more choice for residents when it comes to planning a day's shopping or travelling.

Free travel will replace Dartford's current concessionary fares scheme, which offers 20p journeys within the borough, known as 'DartFare 20', and half price journeys on buses within the county.

Councillor Ann Allen, says this scheme will

make a huge difference to the lives of many residents.

"Our elder residents have asked for cheaper and easier transport and I am obviously delighted that we are making all fares free for passengers who are over 60 or who have disabilities. The new scheme means that eligible residents across the county will be able to visit Dartford for free to experience what our borough has to offer and, of course, our residents will be able to travel beyond boundaries and into London.

We know how important affordable travel is to our residents and we are doing all we can to make sure our system is simple to understand and simple to use," she said.



Bus services in Kent will be free for over 60s in April.

## Old chestnut to benefit from new funding

A community playground and open space at Chestnut Grove in Wilmington is a step closer to a host of new facilities with the submission of a planning application

The proposed new activities include toddler and junior swings, climbing towers, spidernet and slide.

Also included in the playground is a mini-roundabout and a springing seat as well as safety surfacing and a dog-proof fence.

Funding for the scheme includes £10,000 of Council funding – which locals have boosted with money from the Government's Living Spaces initiative.

Tony Martin, Cabinet Member for Finance,

said the scheme was an example of how the Council supported communities to improve their own local spaces.

"Local community and residents groups are often best placed to understand how their areas can be improved and we're always ready to listen. By putting our money up front the scheme has been matched by other sources, so local residents will see even more benefits."

The planning application is expected to be decided over the next couple of months, with the work being carried out for Joydens Wood Community Residents Association by Groundwork Kent-Thameside.



Fun for kids at the new playground

# CELEBRATING THE QUEEN'S BIRTHDAY



Her Majesty The Queen

Photograph of HM The Queen supplied by © www.royalimages.co.uk

Bunting will be out in Dartford in April with a series of events to mark the Queen's 80th birthday.

The celebrations begin with a church service on Saturday 22 April at Holy Trinity Church, which will include a number of the most well-loved hymns and anthems, and will be followed by street entertainment in Dartford High Street.

The Royal Philharmonic Concert Orchestra will complete the Saturday line-up with a Proms-style concert at The Orchard Theatre.

A special St George's Day service will take place on the Sunday, again at Holy Trinity Church, making Dartford the place to be to celebrate that weekend.

More details will be included in the April edition of Dartford Borough News.



A celebratory service will be held at Holy Trinity Church, Dartford.

# SKATES OUT FOR SUMMMER

Skateboarders in Dartford will see 2006 as the year a brand-new, state of the art Skate Park arrived in the town. The new skate park is to be constructed within Central Park, close to the Central Park Athletics Stadium, and will be started during the first half of the year, with completion expected during the summer.

The project is being undertaken by Groundwork Kent-Thameside on behalf of the Council, and surveys have already been carried out to identify the best site for the new facility.

The skate park will feature all mod cons for skateboarders and skaters, giving local enthusiasts a good reason to move away from their current haunts of deserted car parks and shopping areas.

Patsy Thurlow, Cabinet Member for parks and open spaces, says the new skate park will help skaters to improve their skills.

"The new skate park is a very important new facility for young people in Dartford. Everyone who visits the town will remember seeing some of our skateboarders practicing and the new park gives them a space of their own to develop their skills."



Local boy Harley Dean flying high

# FESTIVAL IS SHAPING UP

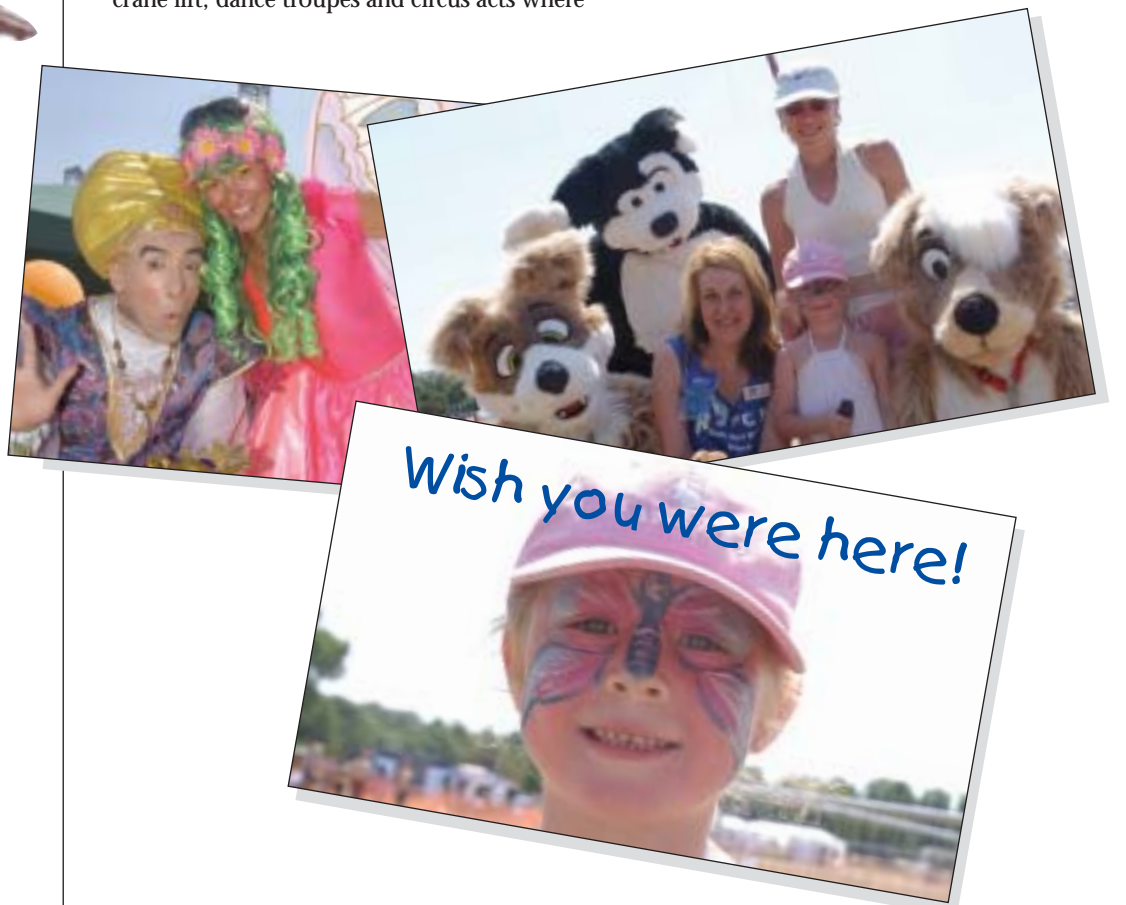
2006 will see the return of the annual summer festival to Central Park and organiser Frank Brown is on the lookout for sponsors, stalls and floats to make this year's festival better than ever.

Last year's Dartford Festival was a huge success bringing with it sun and sand transforming Central Park into a Mediterranean paradise. Visitors from miles around flocked to the park to experience the carnival atmosphere at the free festival weekend.

DJ workshops, skateboard half pipes, a 200ft crane lift, dance troupes and circus acts where

just some of the fantastic activities and events available to Dartford's festival goers. However, the main attraction was the beach volleyball extravaganza, a first for Dartford, which saw 200 tonnes of sand in Central Park and international teams showcasing their skills to the delight of spectators.

For more information about this year's festival contact Frank Brown on 01322 343471 or e-mail [frank.brown@dartford.gov.uk](mailto:frank.brown@dartford.gov.uk).



Wish you were here!

# TOP JUDO CENTRE TO OPEN IN MARCH

Some of the world's premier Judo masters are expected to visit the borough this year as Dartford's new Judo Centre opens its doors.

The stunning new home for Dartford Judo Club, formerly Dartford Judokwai, will become one of the world's top centres for the martial art when it opens in March.

Already heralded as a national centre of excellence, Dartford Judo Centre will be the first purpose built building of its size in the country and the only one in Europe.

The £4.5m building completes the first phase of new sports facilities at Stone Lodge. Over time the complex will expand to include other excellent sporting facilities.



Great news for young martial artists



Club founder Alan Roberts and Council Leader Kenneth Leadbeater unveil the foundation stone.

# New home for bowls

Halls Bowls Club will get a fantastic new home after Council chiefs gave the green light for a six-rink green and pavilion at Stone Lodge.

The new facility will be designed by the renowned Make Architects, the team behind the stunning Judo Centre that is currently being built at Stone Lodge. The site already boasts Stone Lodge Indoor Bowls Club, which is set to receive a face lift under the new plans, and the introduction of the new outdoor green and pavilion will be a complementary addition.

Councillor Kenneth Leadbeater, Leader of Dartford Borough Council, says it is envisaged that Stone Lodge will develop into a sporting hub for the local community.

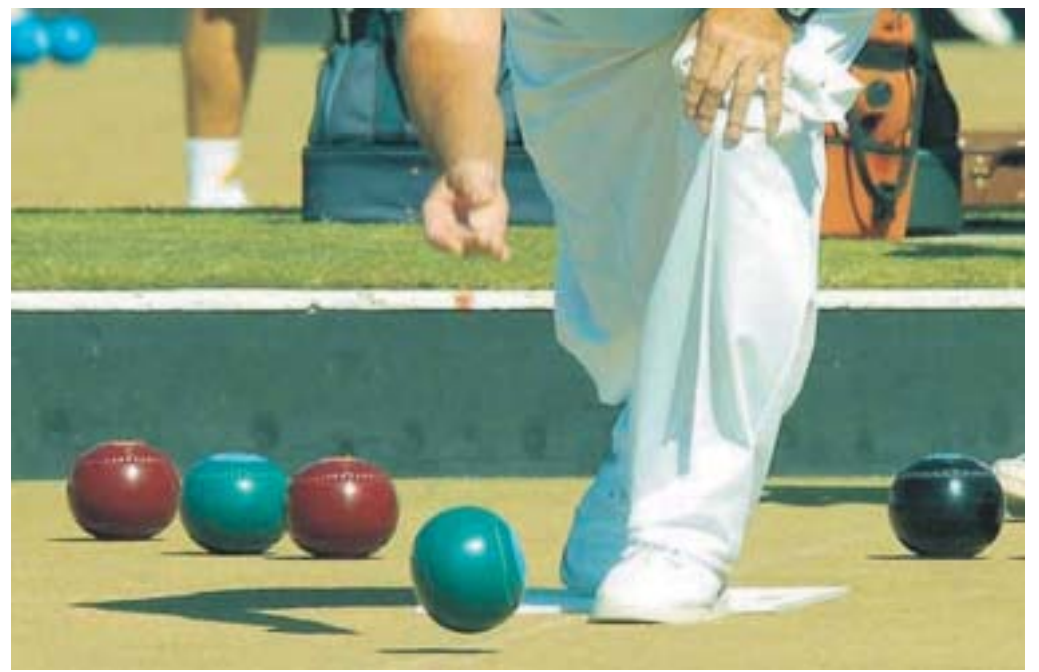
"Dartford is committed to investing in sport and providing top quality facilities that will meet the needs of the whole community. Bowls is just as important to us as football and judo and it is

vital that they are provided with a first rate home to match," he said.

Malcolm Serles, who is both the Captain and Match Secretary of Halls Bowls Club, says that the club members are looking forward to moving into their new home.

"We are really pleased to see that things are moving ahead. The models of the new club look good and we are all looking forward to moving into our new home," he said.

Halls Bowls Club have moved from their original green at Princes Park to give way to the new community football stadium that will see Darts FC return to the borough after a 14-year exile. The Darts will return to Dartford for the start of next season (2006/2007), while Halls Bowls will play away until their fantastic new home is ready.



Lawn bowls will soon be coming to Stone Lodge.

# Town Plan in John Prescott's hands

Plans for a £94 million regeneration of Dartford Town Centre were under the microscope late last year as the Government's Planning Inquiry into the scheme took place.

The Planning Inquiry, carried out by a Government Planning Inspector, reviewed the planning application, approved the by the council in August 2004.

The Inquiry looked into both the planning application, submitted by St James Investments, and the Compulsory Purchase Orders affecting some properties on Lowfield Street and within the area of Acacia Hall.

Extensive plans for the town centre include a Tesco extra, cafes and shops alongside around 500 new homes, a town square and a rerouted carriageway within Central Park.

Approved by the Council in 2004, the application was called in by the Deputy Prime Minister in May of this year.

Legal experts, representing St James Investments, Tesco, traders and the Council, cross examined highways and planning professionals on the effects of the development and

the long term effects on the town.

Leader of the Council Kenneth Leadbeater said, "The Inquiry allowed the Council to put forward our plans for Dartford, which include breathing new life in the central areas and bringing a sense of vibrancy back into the town.

"The Council's purchase of land alongside the existing Central Park, which effectively doubles the park's size, means more publicly accessible open space in Dartford and a host of new opportunities for leisure and social activity."

The plans to expand Central Park with the addition of the Acacia Hall Estate were not public when this planning application was decided and the Council was keen to present its case to the inquiry.

Although scheduled to last for six weeks, a substantial number of objections to the Compulsory Purchase Orders were withdrawn during the inquiry, which ended a week early.

The decision of the planning inquiry will be made by John Prescott, the Deputy Prime Minister, with guidance from the Planning Inspector, and is expected during 2006.



New look market square

A regeneration of Dartford's Town Centre, which is much needed for the town to compete with Bexleyheath and Gravesend, is supported by SEEDA (South East Economic Development Agency), the Deputy Prime Minister's Office (ODPM) and the Council.

An extensive consultation of shoppers, visitors and residents in the town, carried out earlier in the autumn, will help to

develop the Masterplan for the town.

The consultation included details of areas for improvement, including footpaths linking different areas of the town, shopping facilities, and residential zones on the outskirts of the town centre.

Although not focussing on the Lowfield Street planning application, the consultation included the development within the masterplanning process.

VIEW FROM THE CABINET



Jeremy Kite

## How was your Winterval!

2005 was a classic year for collectors of political correctness. Lambeth Council predictably chose to decorate its streets with 'Winter Lights' rather than risk mentioning Christmas and Hull City Council's Equalities Unit told Councillors that they should not use words like 'lady' or 'elderly' when describing their constituents.

My favourite though, was the lady, sorry... female person in Manchester who tried to help Police by suggesting that the driver in a hit-and-run incident she had witnessed was 'quite fat'. This was all too much for Manchester Police who warned her that she could not use "words like that".

In Dartford, we're waging war on this sort of stupidity. My colleague Patsy Thurlow knew just what she wanted to do after joining our Cabinet in 2003. She restored the Town Centre Christmas Tree - much missed for several years. Today it is enjoyed and respected by townsfolk of all faiths and a wonderful centrepiece for celebrations.

And I'm delighted to tell you that a Union Flag flies proudly from our Civic Centre (joined by the cross of St George on appropriate occasions), we're proud of our town's Christmas decorations and our Elderly Forum continues to go from strength to strength. Patriotism, Christmas and an acceptance that we all get old are not concepts banned in our Council.

We try to bring common-sense to issues like crime and anti-social behaviour too. This edition of Borough News includes a story about Christopher Rye - sentenced to 60 days in jail for anti-social abuse of his neighbours. Our enforcement team have a superb record tackling fly-tippers, graffiti and unlawful encampments and offered help and advice to Rye's neighbours in dealing with his abuses.

Sentencing is a matter for the courts, not for Councils, but I am delighted that his crimes have now resulted in a custodial sentence. It's time for common-sense. Our place is standing by the good people, not the bad.

Councillor Jeremy Kite is Deputy Leader of Dartford Borough Council.

# The Bridge puts Dartford in a new league

All eyes will be on Dartford this year as the borough shows off one of the most innovative and electrifying developments in the country - The Bridge at Dartford.

Being developed on the former Joyce Green Hospital site, The Bridge is 264 acres of brown-field (previously built upon) land that will be transformed into a combination of homes, business areas and a science park. Dartford Borough Council and Prologis, the world's leading developer of industrial and distribution space, have teamed up to make the new development.

The first major mixed-use development in the area of the Government's Thames Gateway project, The Bridge sets the standard for all other developers and Councils to follow.

A launch day in early 2006 will herald the start of the main programme of works at The Bridge. With work on the infrastructure already underway this is the perfect time to show off what will be an outstanding new neighbourhood in Dartford.

Sainsbury's have already signed up for the largest building in the commercial area of the project, and will be using their new warehouse as a logistics centre for the south-east of England.

On the housing side the Council and Prologis have teamed up with George Wimpey to provide more than 1000 top quality homes, all with the latest in technology and building materials. Top design team Wayne and Gerardine Hemingway are leading the design for Wimpey and have promised that every home will be unique.

For more information see [www.thebridgedartford.co.uk](http://www.thebridgedartford.co.uk).



Site plan of the innovative development



Artists' impressions of how The Bridge will look

## DARTS' HOME IS ON THE WAY



Council Deputy Leader Jeremy Kite keeps an eye on the ball.

The waiting is almost over for football fans in Dartford as the countdown begins to the opening of the Borough's magnificent new football and community stadium.

Princes Park, which will be home to Dartford FC from September, marks the club's return to the borough after 14 years in exile at other grounds in Kent and Essex.

The £6.5m complex

includes community and corporate facilities, including banqueting for up to 250 people, and is expected to become a venue of choice for celebrations of all kinds.

Facilities alongside the stadium also include a community pitch, available for hire by local sports clubs, and parking for up to 300 cars.

For information see [www.princespark.co.uk](http://www.princespark.co.uk).



Princes Park will be a new home for the Darts and a venue for community activities.

## WIN YOUR PLACE IN HISTORY

### Make Your Mark on The Park

You could name the road leading to Dartford's exciting new stadium in a fantastic competition being run by the Council and the Dartford Messenger newspaper.

With just 8 months to go before Dartford's magnificent Princes Park Community Stadium opens this competition could give the chance to take your place in Dartford's history.

The Dartford Messenger has teamed up with the Council to give one lucky resident the chance to name the main route to the Princes Park stadium from Darenth Road.

Jeremy Kite, Deputy Leader of Dartford Borough Council says this is an opportunity that's not to be missed.

"Princes Park is the big focus for Dartford this year and will quickly become a venue for a wide variety of activities, from football and other sports to education, functions, social evenings and business events."

"The opportunity to name roads doesn't come along very often and it really is a chance to leave a permanent legacy on the face of Dartford."

The best name will be picked by a panel of judges, including The Council Leader and Deputy Leader, Dartford Messenger Senior Editor Sandra Hembury and the Council's Strategic Director Sheri Green.

Sandra said: "It is not often that our readers get a chance to play a part in history."

The stadium will be a major sporting complex for the borough, not

just for the football club but for other community groups. It would be a great honour for anyone to name the route to the Princes Park Stadium, and I am delighted that the Dartford Messenger will be crucial in this stage."

The fortunate winner will unveil the street sign for the new road later in the year and also be a special guest at the stadium opening.

To enter, all you have to do is think of a name for the new road and send it to:

Make Your Mark  
Dartford Borough News  
Civic Centre  
Home Gardens  
Dartford  
Kent DA1 1DR

Or email [dbn@dartford.gov.uk](mailto:dbn@dartford.gov.uk)

In the event of more than one entry with the winning name the winner will be picked from a hat.

The closing date for entries is Friday 10 February.



For inspiration and ideas for your entry see [www.princespark.co.uk](http://www.princespark.co.uk).

VIEW FROM THE CABINET



Alex Dunn

**Box it is a huge success!**  
(and yes you can leave the lid on)

Each year the Government sets a target for the percentage of waste collected by local councils that must be recycled. This year, Dartford's target was to increase recycling from 13 per cent to 21 per cent.

The council had to decide how best to meet this arbitrary imposed figure. Through careful research and by analysing recycling schemes around the country we decided to introduce recycling boxes. We found that this method of collection meets the needs of the majority of local residents and also leads to increased recycling levels.

I am delighted to say that the scheme is already proving to be a great success. Recycling rates are up by 25 per cent across Dartford and have soared to an astronomical 44 per cent in some parts of the borough.

This is a fantastic achievement and I would like to thank Dartford residents for embracing the new scheme so quickly. Their commitment and dedication has helped to make Box-it really count and I hope that household recycling will continue to grow from strength to strength.

I recognise that there have been a few teething problems and I would like to thank residents for the patience and perseverance that they have shown while the new scheme beds down.

Some residents have commented that they are worried about their recyclables getting wet or being blown away. Obviously severe weather conditions could cause some problems and we have relaxed our original guidelines by allowing lids to be left on boxes when they are put out for collection. Keen recyclers have also worried about the capacity of the box. We want residents to recycle as much as possible so are offering extra boxes currently free of charge.

If your new black box is causing storage problems, you would like assisted collection or an extra box, please let us know as soon as possible. We will be happy to help find a way that you can recycle that suits your needs, remember we don't know if you're having problems with the new recycling scheme unless you tell us.

Keep up the good work!

*Councillor Alex Dunn is Councillor for Longfield, New Barn & Southfleet.*

# Recycling is on the up

Christmas gave recycling another boost with latest figures showing that household recycling has rocketed by a whopping 30%. With the help of local residents, who put their new black boxes to work over the festive season, the amount of recyclables collected each week rose by more than 25 tonnes.

Councillor Alex Dunn, portfolio holder for recycling and refuse, says the new recycling scheme has got off to a flying start.

"Box-it is proving to be a huge success and with the backing of local residents Dartford's recycling will continue to grow from strength to strength.

"As with any new scheme we have experienced a few teething problems, but these are gradually being ironed out as both the Council and residents get to grips with the new boxes," he said.

John Abbott of Cleanaway, the Council's contractor for collecting and sorting the borough's waste, said,

"I noticed straight away that Dartford had improved its recycling scheme as the amount of recycling we collected kept rising. We have seen an incredible improvement over the past month and their new recycling scheme appears to be a huge success."

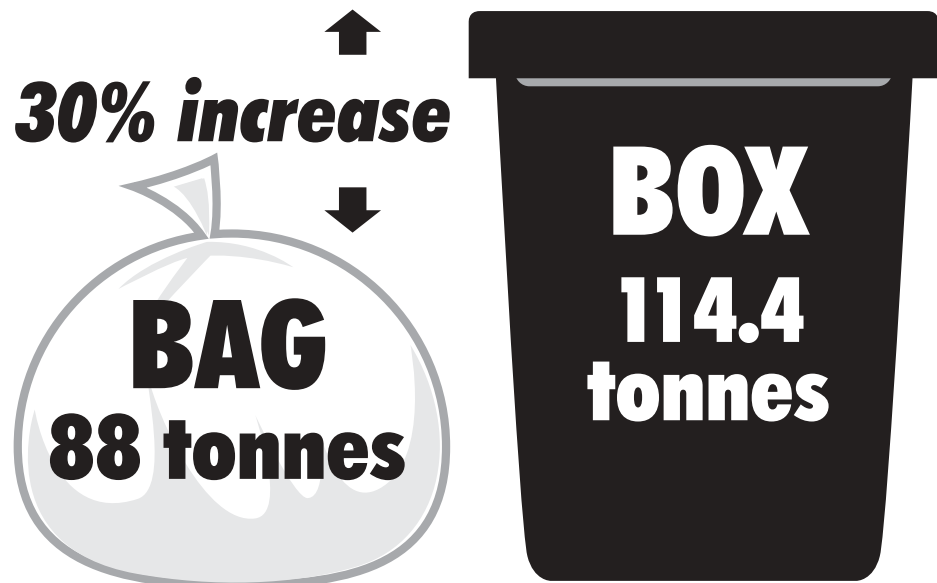
The Box-it scheme makes recycling easier and cheaper; as it is more user friendly and eliminates the continual cost of replacing and delivering new sacks. Lids can now be left on the boxes on windy days but with careful packing, such as stacking heavier items on the top, this should not be necessary.

Councillor Dunn continued by stressing the importance of recycling and thanked Dartford residents for the commitment they have shown towards the new scheme.

"Each year we throw valuable resources and money away by throwing our rubbish into landfill sites. Over 80% of all our household waste can be recycled so we need to act now and work hard to recycle more.

We want to encourage residents to make the best use of the facilities available and recycle everything they can as often as possible. It is only with their continued commitment and dedication that that we can make a real difference to the amount that Dartford recycles," he said.

To find out more about recycling in Dartford visit [dartford.gov.uk](http://dartford.gov.uk) or phone 01322 343290.



## Door-steppers find Box-it buzz

The buzzword in Dartford is 'black box' as soon as you mention it people want to talk, well that is what the door-steppers are finding.

For the past three months specialist recycling experts have been knocking on doors across the borough. From Tuesday through to Saturday they are pounding the streets of Dartford and averaging 150 doors per day as they spread the word on Box-it.

Sarahjane Widdowson, one of the door-steppers from Hyder Consulting, says we have had a very positive response from residents. "So far I have not come across anyone who doesn't recycle. Residents seem very eager to recycle and are interested in finding out more," she said.

Door-steppers are following the delivery route that the boxes took in October so that they can target the residents who have had their boxes for longer. Phase one of three

phase door-stepping programme is already complete with phase two underway. By March 2006 they will have knocked on all 35,000 doors of the borough.

Councillor Alex Dunn, Portfolio Holder for Recycling and Refuse, says the door-stepping campaign will further increase the borough's recycling levels.

"This campaign provides the perfect opportunity for residents to find out more about recycling and ask questions about the new Box-it scheme. The recycling experts will help clear up any uncertainties and will be encouraging more people to recycle," he said.

The recycling door-steppers have Dartford Borough Council identification badges and work on Tuesday – Saturday between 10am – 6pm.

For more information on the Box-it recycling scheme contact the Recycling and Refuse team on 01322 343290 or visit [www.dartford.gov.uk](http://www.dartford.gov.uk)



### What you can box

- clean paper + newspapers
- magazines + junk mail
- cardboard  
(please squash boxes)
- tins + cans  
(please wash + squash)
- foil containers, foil milk bottle tops + cooking foil
- plastic bottles  
(please wash + squash)
- plastic film + carrier bags



Sarahjane meets Dartford resident Nicola Sparks.

# New life for Dartford Marshes



The tranquillity of Dartford's marshes



The marshes are rich in wildlife.

Exciting plans to breathe life back into Dartford's one and only area of marshland are moving ahead. Residents will soon be able to enjoy the unique biodiversity that Dartford Marshes, which is located alongside one of the Country's most exciting and environmentally friendly new developments; The Bridge, has to offer as a wide range of improvements get underway.

A management plan drawn up by Groundwork Kent Thames-side (GKT) will incorporate Dartford Marshes into the surrounding Crayford and Erith Marshes, restoring the historic marshland habitats and landscapes to their former Victorian and Edwardian beauty. Improved access and security measures will be put in place to prevent antisocial behaviour and fly tipping.

Councillor Mrs Patsy Thurlow, Portfolio Holder for Parks and Open Spaces, says that Dartford Marshes will provide a marvellous

opportunity for residents to take advantage of the wildlife and enjoy nature on their doorstep.

"Dartford Marshes is a real asset to the borough and it is important that we make these much needed improvements so that residents can continue to enjoy our marshes for years to come. It is unusual to have such a wonderfully diverse habitat so close to London and we want to ensure that it is protected for years to come.

We would like to thank the English Partnerships for their help in securing the extra land for the marshes from the NHS as this makes a vital contribution to Dartford Marshes," she said.

English Partnerships acquired land from the former Joyce Green Hospital site, which adjoins Dartford Marshes, on behalf of Dartford Borough Council on 31 March 2005. This made available funding of almost £400,000.

## WHERE YOUR RECYCLABLES GO



Bale storage and loading bay

**Ever wondered where your recyclables go after you place them in your box? Well here is your chance to find out.**

Dartford Borough News visited the Cleanaway Materials Recycling Facility in Thamesmead, which is where all Dartford's recyclables are taken after collection, to find out exactly what happens.

Everyday hundreds of tonnes of recyclables arrive at the centre ready for sorting. Plastic bottles, paper, tins and cans are just a few of the materials that the machines carefully separate and bale up ready for re-processing.

The first machine on the conveyer belt to separation is the trommel screen. The huge washing machine like drum spins round, separating containers from paper and cardboard by using different size holes. Next up, is the ballistic separator, the shaking paddles move up

and down, further separating small pieces of paper from containers.

Containers then proceed through a host of machinery that use the 'magic' of magnetic and infra-red technology to sort steel, aluminium and different types of plastics.

Paper is sent to a cascade tower, where powerful fans unravel sheets of paper, blowing them to the top of the tower for collection, whilst heavier materials, such as cardboard, drop to the bottom. As well as travelling through special suction and infra-red machines, paper travels along conveyer belts into sorting cabins, where pickers check its quality and further sort it into grades.

After all the sorting is done it is time for the recyclables to be baled up and shipped out. Bunkers, running under the sorting cabins, collect the separated materials and transport them to the balers, where they are squashed and packed into cubes.

## FASTRACK IS ON TRACK

A new transport system aimed at increasing access between Gravesend and Dartford's town centres will start in March, with promises of slashed journey times between Dartford's town centre, Bluewater and Darent Valley Hospital.

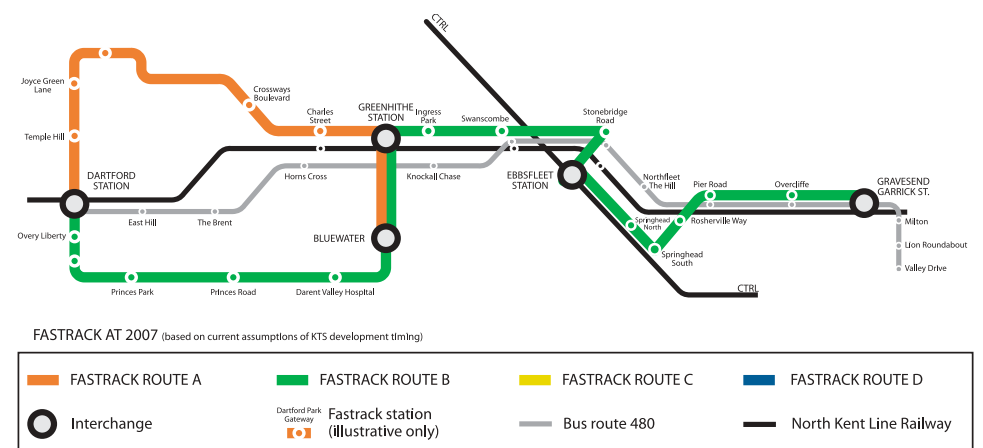
The Fastrack service promises modern buses operating a high frequency throughout the northern areas of the Borough and is designed to reduce the impact of new developments at Eastern Quarry, Swanscombe Peninsula and The Bridge.

The first route on the Fastrack system will include Dartford train station, Princes Park

stadium, and Darent Valley Hospital, continuing through Bluewater, Greenhithe and Swanscombe on to Gravesend.

Within 18 months the second Fastrack route will take in the northern edge of the Borough – again starting at Dartford train station and running through The Bridge and Crossways on the way to Bluewater. The first route will be adjusted to include the Ebbsfleet International Station when it opens in 2007.

For more information go to [www.go-fastrack.co.uk](http://www.go-fastrack.co.uk).



Fastrack route

## Borough blitz

Residents across the borough have been benefiting from cleaner communities since the Deep Clean initiative was introduced in 2003.

The Deep Clean team has been moving from ward to ward, going above and beyond routine maintenance work and tackling environmental eyesores such as graffiti, fly tipping and overgrown vegetation. The team has also been working with local residents, community groups and schools to spruce up the borough.

Swanscombe was one of the latest areas to receive the week-long deep clean treatment. Friends of Swanscombe Heritage Park, students from Swan Valley Community School and a host of local volunteers all rolled-up their sleeves and joined in the deep clean action in October. Armed with litter picks and sacks, they left no stone unturned as they helped to clean-up Swanscombe Heritage Park.



Swanscombe's big clean

Councillor Jeremy Kite, Deputy Leader of Dartford Borough Council, praises the scheme which was highlighted in the latest government inspection of Dartford as a model of good practice.

"The Deep Clean programme is an important initiative that has demonstrated huge support and commitment from the local community who work hard at keeping their environment clean and tidy, long after the Deep Clean team have moved on."

# Neighbour from hell behind bars



Christopher Rye

A man nicknamed the neighbour from hell by local residents has been jailed for 60 days and served with a five year ASBO after work by Dartford Borough Council and Kent Police put a stop to his reign of terror. Twenty one year old Christopher Rye of Carleton Road, Dartford was sentenced at Chatham Magistrate's Court following the latest in a string of offences.

Rye, who is currently serving a sentence for driving whilst disqualified, landed a new jail term and Anti-Social Behaviour Order (ASBO) after magistrates heard how he had continually harassed and tormented local residents. His threatening behaviour came to a head in June 2005 when he punched an elderly neighbour, for which he was sentenced on Friday 6 January.

Rye will now feature in one of the Council's innovative 'Not Wanted' campaigns to publicise the strong stance taken by the Council against anti-social behaviour.

Councillor Jeremy Kite, Deputy Leader of Dartford Borough Council, says the Council takes a no-nonsense approach to anti-social behaviour.

"Not all Councils go to the lengths that Dartford does to pursue people like Rye but I make no apology for our strong stance and hope his victims can take some comfort that we have helped to put him behind bars. I am very proud of our officers who helped take much of the pressure off traumatised residents during the court process.

We don't go in for gimmicks and short-lived publicity stunts – our work in defence of law abiding residents is practical and effective. We work on the simple principle that it is jobs and criminals who should be scared to go out, not decent families and residents.

I have three bits of advice for those who make the lives of others a misery – change your lifestyle, move away from Dartford or get used to the taste of porridge," he said.

The conditions placed on Rye's ASBO prohibits him from "acting, or inciting others to act, in an anti-social manner that causes, or is likely to cause harassments, alarm or distress to any person not of the same address." If he breaches the conditions of his ASBO within the next five years it is a criminal offence and he will be subject to criminal proceedings with the potential for longer custodial sentences.

To report anti-social behaviour call Pam Kaur on 01322 343952 or e-mail pam.kaur@dartford.gov.uk

# Demoted tenancy hits troublemakers

Tough new powers aimed at reducing anti-social behaviour by Council tenants, have been introduced after receiving whole-hearted approval by the Council.

The demoted tenancy policy enables the Council to reduce the rights of trouble-making tenants if they are found to be harassing or intimidating neighbours, or are preventing others from living peacefully within the borough.

Councillor Kenneth Leadbeater, Leader of Dartford Borough Council, said the new policy balanced rights and responsibilities perfectly.

"The vast majority of our residents live peacefully within the borough and enjoy their homes and communities. However there is a minority that behave in such a way that they frighten, intimidate or prevent other residents from such enjoyment. This new policy gives the Council teeth to tackle anti-social behaviour and protect our residents' rights at the same time.

"Demoted tenancies are a last resort and should act as a simple deterrent against poor behaviour. Nevertheless we are prepared to use this system to support all of the law abiding residents in Dartford."

A consultation of the Council's 4174 tenants and leaseholders, as well as partner organisations, revealed strong support to introduce the new scheme within the borough.

## how it works

Under the new demoted tenancy policy tenants could face losing their homes if adequate behaviour is not demonstrated, or they breach their tenancy agreement following the demotion

of tenancy rights.

In the first instance tenants found committing anti social behaviour will be warned of the consequences of a demoted tenancy.

Further acts will result in demotion, following an application to the court - with the tenant holding fewer rights for a period of twelve months. A secure tenancy, with regained rights, is restored if no further problems are experienced.



Demoted tenancy is a new weapon in the war on anti-social behaviour.

# River renewal

Visitors to Central Park will soon benefit from the crucial works that are taking place to improve access to the River Darent, restoring its status at the heart of Dartford. The Environment Agency, in partnership with Dartford Borough Council, is leading the way on the major improvements which got going last week and will see the River Darent de-silted, returning both the river flow and wildlife. Part of the park and the Princes Park Road pedestrian gate will be fenced off to ensure public safety. Work should take four weeks to complete.



The Darent clean-up begins.



The River Darent near Holy Trinity Church

# Dirty money



Lucky Linda Bellhag counts her Dartford thousands.

Dartford shoppers couldn't believe their luck when Council staff handed out £50 notes in the High Street last autumn to raise awareness of the new litter laws. The specially designed 'Bank of Dartford' £50 notes showed visitors and shoppers to the town what they stand to lose if they are caught dropping litter in the borough.

Councillor Jeremy Kite, Deputy Leader of Dartford Borough Council, says this was a fun way to get the message across. "Decent residents are picking up after litter-bugs by footing the

huge clean-up bill which stands at almost one million pounds for this year alone. This is a ridiculous waste of money to shell out on cleaning up after people who can't be bothered to put their rubbish in the bin.

Dropping litter is a disgusting habit and we want to encourage residents to take pride in their town and keep their streets clean and tidy by putting their rubbish in the bin. It's not hard to do and at the end of the day it could save on Council Tax," he said.

# Win Win Win

Dartford Borough News is giving you the chance to win theatre tickets to one of two fantastic shows at The Orchard Theatre this February. All you have to do is answer the following question and state which show you would prefer to see: Kensuke's Kingdom on Tuesday 14 February at 6:30pm (1 family ticket – 2 adults, 2 children) or Mack & Mabel on Monday 20 February at 7:45pm (one pair of tickets).

*Mack and Mabel tells the story of which silent era movie maker?*

Email or post your answer plus your contact details (including telephone number) and preferred show to [dbn@dartford.gov.uk](mailto:dbn@dartford.gov.uk) or Dartford Borough News, Dartford Borough Council, Civic Centre, Home Gardens, Dartford, Kent, DA1 1DR before the closing date Tuesday 7 February at 5:00pm.

**Competition rules:**

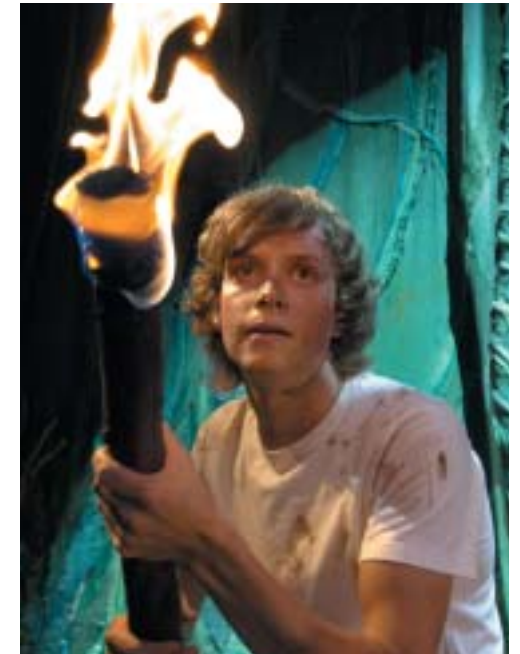
Employees of Dartford Borough Council and their families are not eligible. Prizes are not transferable. Winners will be informed by telephone on Tuesday 24 January. The editor's decision is final.

Personal information is requested to assist the distribution of prizes. This information may be used in the future to inform you about related events and activities and will be held securely.

# New shows at the Orchard



Mack & Mabel



Kensuke's Kingdom

A new season of entertainment has begun at Dartford's The Orchard Theatre, with an array of shows to suit all ages and interests.

David Soul and Janie Dee are to star in a new revival of Jerry Herman's classic romantic musical Mack & Mabel, coming to The Orchard from Monday 20 to Saturday 25 February.

This bitter sweet love story is based on the relationship between movie maker Mack Sennett and his star comedienne, Mabel Normand. It tells the heart-wrenching love story of two of the silent era's greatest legends.

Created by John Doyle and team, whose uniquely imaginative production of Sweeney Todd enthralled audiences and critics in the West End and now on Broadway, this production of Mack & Mabel presents a fresh, inspiring, and deeply passionate revival of a poignant love story, driven by Herman's much-loved score and featuring such timeless hits as I Won't Send Roses, Time Heals Everything, Look What Happened to Mabel, and Tap Your Troubles

Away. Music and Lyrics are by multi-award winning composer Jerry Herman, one of Broadway's greatest living legends and the man behind Hello Dolly!, Mame and La Cage Aux Folles.

For younger audiences, The Orchard has a great half-term treat as the award winning Kensuke's Kingdom takes to the stage between Tuesday 14 and Saturday 18 February.

The world premiere of Michael Morpurgo's award-winning book, Kensuke's Kingdom, is presented by the same company behind the acclaimed stage productions of The Jungle Book, Tom's Midnight Garden and George's Marvellous Medicine.

The story follows the adventures of Michael, a young boy who sets out to sail round the world with his parents. When their boat is hit by a terrifying storm Michael is washed overboard and wakes up to find himself stranded on a Pacific island with just his dog Stella to help him survive in a hostile new world. However, he

soon makes an extraordinary discovery - the seemingly deserted island is already home to one extraordinary man – and this is Kensuke's kingdom!

Michael Morpurgo is the author of more than 60 books and winner of numerous awards including the prestigious Whitbread Children's Book Award. He is also a past Children's Laureate and tireless campaigner for children's literature.

Kensuke's Kingdom is a truly magical adventure story which will enthrall and enchant the whole family, especially all 5-14 year olds.

**Kensuke's Kingdom**

Tuesday 14 – Saturday 18 February

**Mack & Mabel**

Monday 20 – Saturday 25 February

For all ticket process and further information please call the Box Office on 01322 220000 or visit our website at [www.orchardtheatre.co.uk](http://www.orchardtheatre.co.uk).

# What's on

**CONTACT TELEPHONE NUMBERS**

Orchard Theatre 01322 220000  
Mick Jagger Centre 01322 291100  
Miskin Theatre 01322 629472

**JANUARY**

WED 25 - SAT 28  
MON 30  
TUES 31

**ST PETERSBURG BALLET THEATRE**  
The Orchard Theatre  
**THAT'LL BE THE DAY**  
The Orchard Theatre  
**BARBARA DICKSON**  
The Orchard Theatre

**FEBRUARY**

WED 1  
THU 2  
THU 2 - FRI 3  
FRI 3 - SAT 4  
MON 6 - SAT 11  
SAT 11  
TUE 14 - SAT 18  
SAT 18  
MON 20 - SAT 25  
SAT 25  
MON 27  
TUE 28

**ACADEMY OF ST MARTIN IN THE FIELDS**  
The Orchard Theatre  
**KILLER QUEEN**  
The Orchard Theatre  
**MBAWULA - South African Choir**  
Mick Jagger Centre  
**FIREMAN SAM TO THE RESCUE!**  
The Orchard Theatre  
**DIRTY DUSTING**  
The Orchard Theatre  
**GEORGE MELLY & DIGBY FAIRWEATHER'S HALF DOZEN**  
Mick Jagger Centre  
**KENSUKE'S KINGDOM**  
The Orchard Theatre  
**THE UKULELE ORCHESTRA OF GREAT BRITAIN**  
Mick Jagger Centre  
**MACK & MABEL**  
The Orchard Theatre  
**IAN McNABB & SUPPORT**  
Mick Jagger Centre  
**THE MAGIC OF THE MUSICALS**  
The Orchard Theatre  
**THE REDUCED SHAKESPEARE COMPANY**  
The Orchard Theatre

# What's in store?

Residents can take a sneaky peek at what Dartford Borough Museum has been collecting over the years as the museum reveals unseen objects in its fantastic new exhibition, 'What's in store?'

After closing for a week to recover from the success of its latest exhibition, 'Our Finest Hour', the museum re-opened with a fantastic display straight from the store room. Local artefacts, royal memorabilia, domestic items, war souvenirs and toys and games are just some of the objects that are on display.

Councillor Mrs Patsy Thurlow, Portfolio Holder for Dartford Borough Museum, says this exhibition showcases the tremendous donations that people have made to the museum over the past seven years.

"'What's in Store' is an exciting exhibition made up from a wide range of interesting items that have been donated to the museum over the years. The beauty of this exhibition is that people will not know what to expect, the exhibits are so varied that everyone is sure to find something that really interests them," she said.

For more information contact, the Museum on 01322 224739.



Dr Mike Still gives Dartford Borough News a view of the exhibits on display.

# DART sports

## Volleyball club nets big grant

Beach volleyball was the hottest ticket this summer, with Dartford hosting its first ever beach volleyball tournament as part of the Dartford Festival.

Teams from around the country, and as far away as Canada, took part in the two day fiesta which saw more than 200 tonnes of sand shipped in to create a beach in Dartford's Central Park.

Dartford Volleyball Club, the host team and winners of the mixed 4 v 4 grass tournament, have been growing in popularity ever since the festival and were recently awarded £1,000 under the Council's Made in Dartford grant scheme. The club will be using the grant to attract women into the sport.

Chris Dixon, Dartford Volleyball Club Youth and Community Officer, says that this grant is a tremendous boost to volleyball in Dartford.

"We really appreciate the amount of support that we have received from Dartford Borough Council and will use this money to encourage women

to participate in volleyball. It's a great team sport and it is beginning to really take root in Dartford," he said.

Eleven Dartford clubs and societies were awarded grants through the Sports, Arts & Heritage grants totalling more than £8,000.

Councillor Tony Martin, portfolio holder for grants, is delighted that so many clubs and organisations are benefiting from the scheme.

"The grant scheme provides an important avenue for residents to gain much needed funds for community projects and initiatives. The awards may be for large or small amounts of money, but they are invaluable to the organisations and the people they benefit," he said.

For more information on Dartford Volleyball Club visit [www.dartford-volleyballclub.co.uk](http://www.dartford-volleyballclub.co.uk) or call Chris Dixon on 07990 897 947.

To find out more about the Made in Dartford grant scheme contact Richard Watts on 013322 343224 or e-mail [richard.watts@dartford.gov.uk](mailto:richard.watts@dartford.gov.uk)

# Stadium work starts

Building work for Princes Park Stadium got underway in mid-November with a huge turnout to a planned low-key press event for regional media.

An astonishing 60 people, including Council leaders, club officials and fans, joined the Council's contractors on site to see the start of the historic development and to take the opportunity for photographs at what will be the new home for Dartford FC.

Jeremy Kite, Deputy Leader of Dartford Borough Council, said,

"Every time I meet with Dartford FC's fans and officials I am reminded of the passion and dedication that has kept the town's team going over the last decade and why this stadium will make a hugely positive impact on the town."

Completion of the stadium complex is expected in late summer 2006.



Council Leader Kenneth Leadbeater with Bill Archer from the Darts

## Sophie - a star in the making



Sophie Corbridge is a future superstar.

Sophie Corbridge knows exactly where she wants to be on 27 July 2012 - at the opening ceremony of the London Olympics. The talented 13 year old Dartford schoolgirl was very excited to hear that London had won its Olympic bid but she now realises that it will take hard work to achieve her dream.

The talented triathlete and winner of this year's U13 Dartford Sports Award is already off to a

fast flying start. This summer she competed in the U15 World Biathlon Championships in Monaco and, despite being at least a year younger than her competitors, came home in an amazing third position and was the first Brit to cross the finish line.

Sophie, who had to run 500m, swim 100m in the sea and then run another 500m, said that the grant awarded to her as part of the Performer's Award scheme run by Dartford Borough Council was really useful.

"It's fantastic that the council helped out with the cost of travelling to and from the competition. It feels good to know that it's not all down to my family and that others are helping and supporting me."

Performer's Awards are available all year round to anybody that lives in Dartford Borough and performs at a high level in sports or the arts. The Council offers a range of grants including Sports, Arts & Heritage, Environment and Voluntary Sector grants.

For more information, please contact Richard Watts on 01322 343224 or email [richard.watts@dartford.gov.uk](mailto:richard.watts@dartford.gov.uk).

## COUNCIL HELPS CRICKET CLUB TO GET FIT FOR THE FUTURE

Cricket got a huge boost as Dartford Borough Council granted thirty thousand pounds to get the facilities of one of the borough's oldest clubs fit for the future.

Dartford Cricket Club's fifty year old pavilion, in Hesketh Park, will be refurbished and extended with new windows, improved security and new showers and changing areas. The club, which has a successful youth development programme, needs these improvements so that it can continue to develop its youth programme and progress up the leagues.

Councillor Kenneth Leadbeater, Leader of Dartford Borough Council, says Dartford takes sport very seriously and we want to ensure that we have quality facilities that meet the sporting needs of future generations.

"We value and understand the importance of sport and we want to offer a wide variety of sports across the borough," he said.

Surge Singh-Birring, Head of Youth Development at Dartford Cricket Club, says the grant will make a massive difference to the club.

"This grant will help us tremendously in youth and community development. It will make a massive difference to our spectators who will have some shelter from the wind and the rain. This is a great boost to our club and it is greatly appreciated," he said.



Beach volleyball in Central Park last year

## Sports and Fitness Centres

### FAIRFIELD POOL & LEISURE CENTRE

DARTFORD Borough's largest sport & leisure centre, Fairfield boasts a 2000 sq. ft. air conditioned fitness gym with state of the art equipment, 25m swimming pool plus teaching pool, spacious air conditioned dance studio, luxurious health suite featuring large sauna and steam rooms, refreshing jacuzzi complete with resident aromatherapist and beautician, squash courts.

TELEPHONE: (01322) 224400

### BECKET SPORTS CENTRE

Shepherds Lane, Dartford. Please call for opening hours and charges.

TELEPHONE: (01322) 280646