

**Development Control Section**  
**Quarterly data - October to December 2011**

The graphs on the following pages set out key performance indicators for the section –

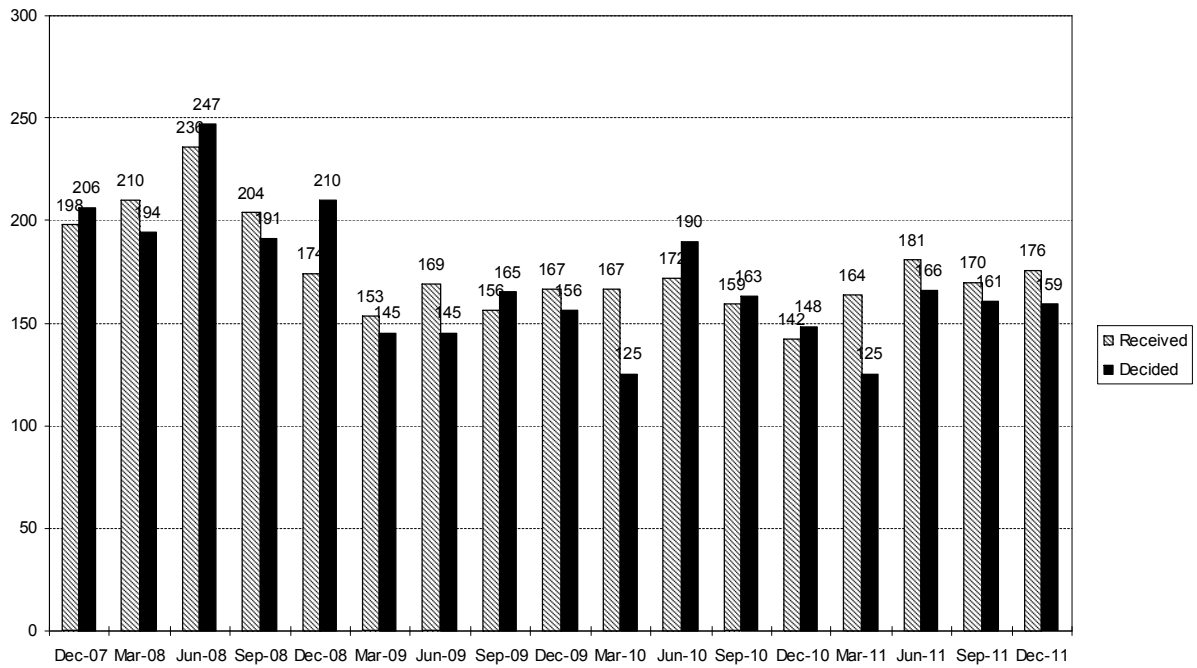
Planning applications

- No. of applications received and decided
- % of major applications decided in 13 weeks
- % of minor and other applications decided in 8 weeks
- Number of applications pending

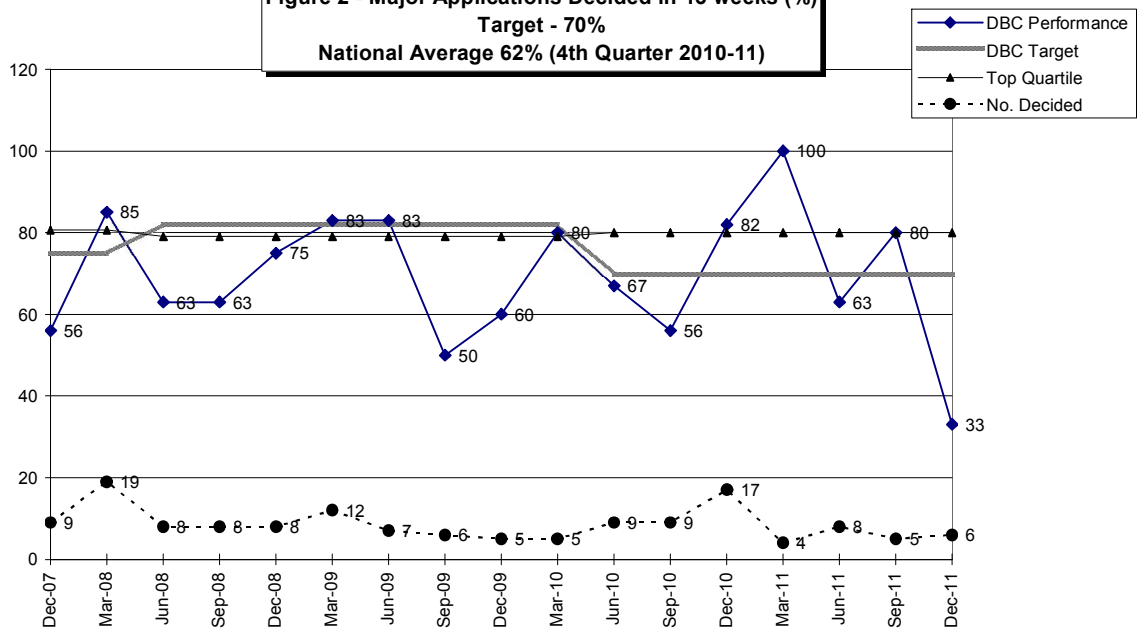
Appeals

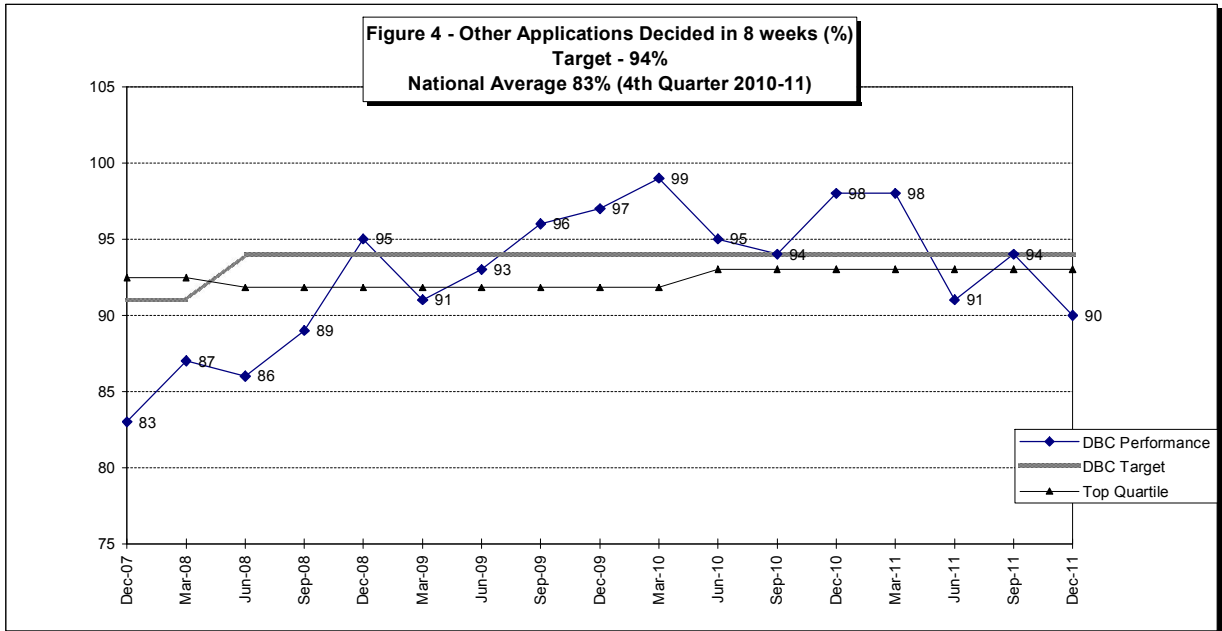
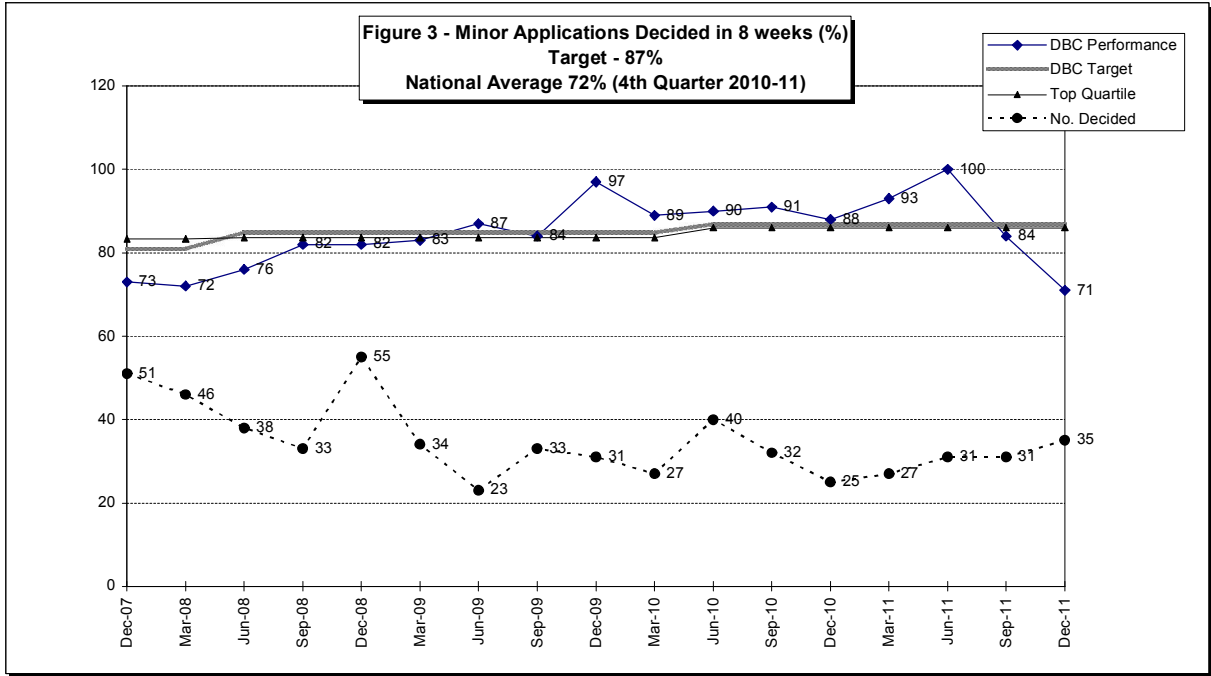
- % of appeals allowed

**Figure 1 - Planning Applications Processed**

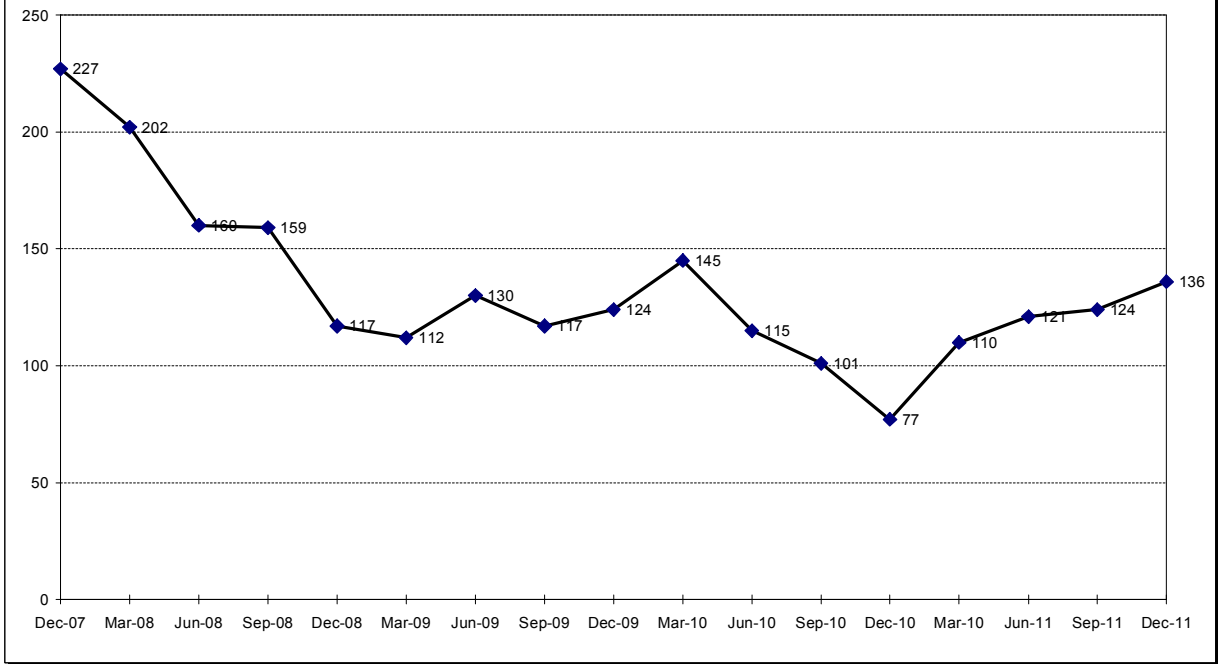


**Figure 2 - Major Applications Decided in 13 weeks (%)**  
**Target - 70%**  
**National Average 62% (4th Quarter 2010-11)**





**Figure 5 - Outstanding Planning Applications**



**Figure 6 - Percentage of Appeals Allowed**

