

# **Dartford Town Centre Area Action Plan**

**2001 Census data**

## **Contents**

Introduction

Brief Analysis of Census Percentage Tables

    Town Centre Residents

    Town Centre Workers

## **Introduction**

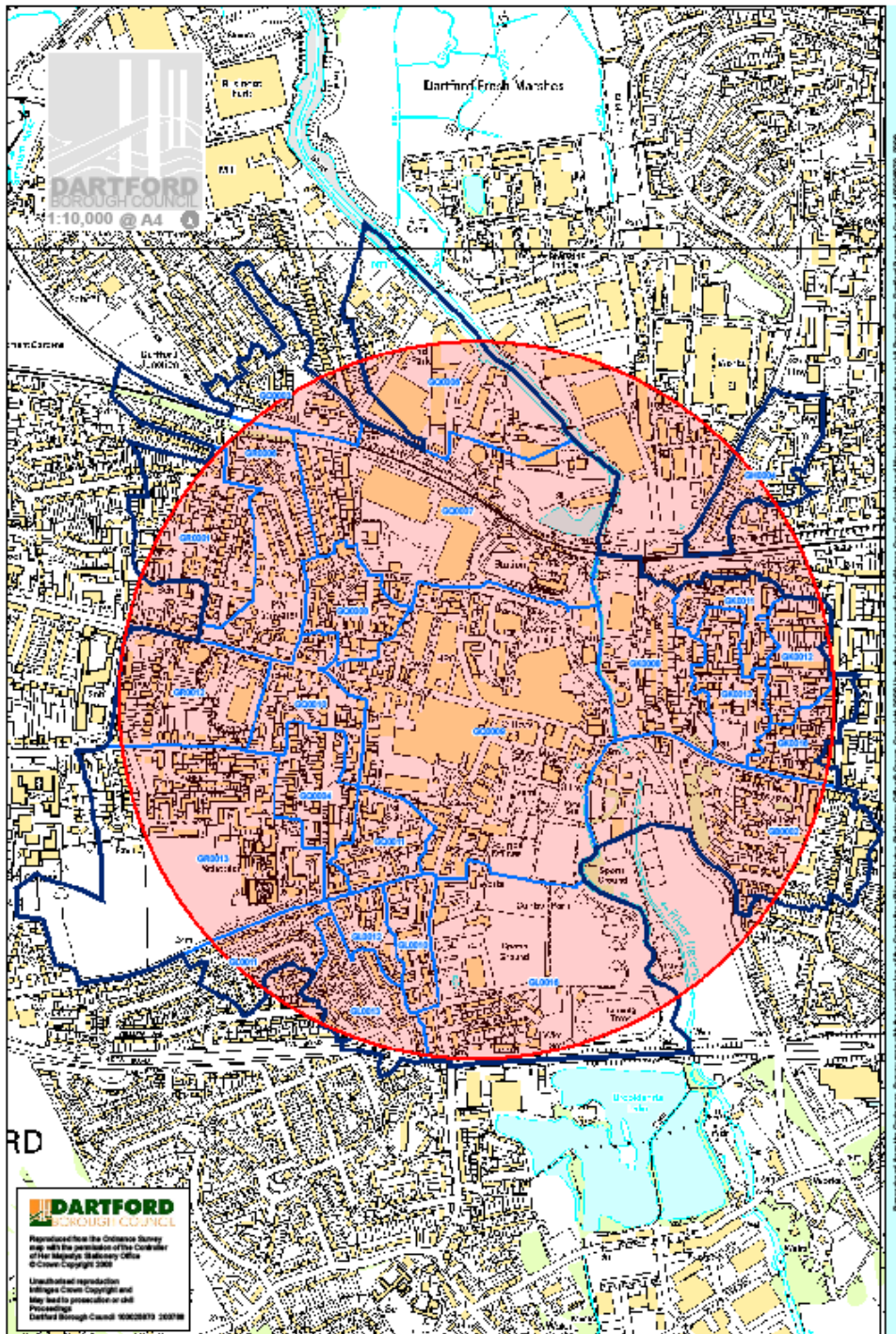
This paper sets out general information about town centre residents and people who work in the town centre at 2001 Census.

For the purposes of this analysis the boundary of the town centre has been taken as the area within a radius from One Bell Corner, which is where the main shopping streets: High Street, Lowfield Street, Hythe Street and Spital Street converge, and Princes Road.

2001 Census Output Areas have been used that best fit the boundary. The Dartford Town Centre geography is based on Output Areas Q0003, Q0004, Q0006, Q0007, Q0008, Q0009, Q0010, Q0011, L0010, L0011, L0012, L0013, L0016, B0002, H0004, K0008, K0011, K0012, K0013, K0016, R0012, R0001, R0006, and R0013.

The boundary, including output area boundaries is shown on Map 1.

Map 1: Town Centre boundary and boundary of component output areas



## Brief Analysis of Census Percentage Tables

### Town Centre Residents

#### **Method of travel to work – Resident Population (UV39)**

The census information shows that the main means of travel to work is by driving a car or van. Although this is consistent with the percentage pattern of Dartford Borough and the South East region, the town centre has the smallest level of travelling to work by driving a car or van. Over 13% of the resident population travel to work by train – the station is located within the town centre providing access to some stations within North-West Kent and a regular service to central London. The town centre has a higher percentage of travel by train than both the borough and the South East region. 10% of the town centre resident population travel to work on foot, a higher percentage than the borough and the South East region.

	Dartford Town Centre	Dartford Borough	South East Region
All People	4858	62095	5766307
Works mainly at or from home	4.7	4.9	6.7
Underground, metro, light rail or tram	0.2	0.2	0.2
Train	13.6	9.5	3.8
Bus, minibus or coach	3.6	3.1	2.9
Taxi or minicab	0.8	0.5	0.3
Driving a car or van	31.1	38.3	39.9
Passenger in a car or van	3.8	4.1	3.8
Motorcycle, scooter or moped	1.0	1.3	0.8
Bicycle	0.8	0.8	2.1
On foot	10.3	5.2	6.7
Other	0.1	0.2	0.3
Not currently working	30.1	32.0	32.6
	100.0	100.0	100.0

This material is Crown Copyright.

The table shows the usual resident population aged 16 – 74 by the method of travel to work. The method of travel to work is for the longest part, by distance, of the usual journey to work.

#### **Cars or Vans (UV62)**

The majority of town centre households own one or more vans or cars. However, over 30% of town centre households do not have a car or van, this is a much higher proportion than in Dartford Borough or the South East region. The percentages of households with 2 or more cars within the town centre are much lower than those in the borough and South East region. The table also shows that in Dartford Town Centre the number of households is greater than the number of cars and vans. In Dartford Borough and the South East there are more cars and vans than there are households.

	Dartford Town Centre	Dartford Borough	South East Region
All Households	2958	35240	3287489
No car or van	30.3	19.9	19.4
1 car or van	50.5	46.1	42.6
2 cars or vans	16.8	27.1	29.6
3 cars or vans	1.9	5.2	6.3
4 or more cars or vans	0.5	1.6	2.1
	100.0	100.0	100.0
Total cars or vans	2723	43348	4271483

This material is Crown  
Copyright.

The table shows all households by whether there are any cars or vans owned or available to the household, and if so how many. It also includes a total count of cars or vans in the area. The number of cars or vans available for use, by one or more members of a household includes company cars and vans available for private use. The count of cars or vans in an area is based on details for private households only. Cars or vans used by residents of communal establishments are not counted.

#### Age (UV04)

The census information shows a higher proportion of people aged 20-39 than for Dartford Borough or the South East region. The proportion aged 0-19 is similar to Dartford Borough and the South East region. The proportion of people aged 85 and over is similar to that for the Borough.

	Dartford Town Centre	Dartford Borough	South East Region
All People	6699	85911	8000645
0-4	7.2	6.5	5.9
5-9	6.7	7.0	6.3
10-14	5.8	6.6	6.5
15-19	5.6	5.8	6.0
20-24	7.0	5.8	5.8
25-29	9.8	7.2	6.3
30-34	10.4	8.6	7.4
35-39	9.6	8.6	8.0
40-44	6.9	7.0	7.2
45-49	5.6	6.1	6.5
50-54	5.4	6.6	7.1
55-59	4.3	5.3	5.9
60-64	3.6	4.7	4.8
65-74	3.4	4.2	4.4
70-74	3.0	3.8	4.0
75-84	4.0	4.8	5.8
85-89	1.1	1.1	1.4
90 & over	0.7	0.6	0.8
	100.0	100.0	100.0

This material is Crown Copyright.

This table shows the Usual Resident Population by single year categories of age from Under 1 to 74, in five year age groups from 75 to 99, and people aged 100 years and over. For the purpose of Dartford Town Centre this was then reduced into larger group sizes of 5 years from Under 1 to 89 and people aged 90 years and over. Age is derived from the date of birth question on the 2001 Census, and is the age at a person's last birthday. Dates of birth that imply an age over 110 were treated as invalid and the person's age was imputed.

#### **Approximated Social Grade (UV50)**

The table demonstrates that the majority of households in the town centre are of approximated Social Grade C1, meaning that the Household Reference Person is employed within a supervisory, clerical, junior managerial, administrative and/ or professional job. This is similar to Dartford Borough and the South East region. At 19.4% the second highest majority of households are included under Social Grade D: Semi-skilled and unskilled manual workers. This is a higher percentage than the Borough and South East region. The town centre has a much lower percentage of households graded AB than the South East region. Social grade AB consists of those in Higher and Intermediate managerial, administrative or professional jobs. The lowest percentage of households within the town centre were given the Social Grade E which includes those on state benefits, those unemployed or the lowest grade workers, lower than for the Borough or the South East region.

	Dartford Town Centre	Dartford Borough	South East Region
All People Aged 16 and over in Households	5178	66345	6232799
AB: Higher and intermediate managerial / administrative / professional	18.0	20.2	26.4
C1: Supervisory, clerical, junior managerial / administrative / professional	32.6	31.2	32.1
C2: Skilled manual workers	17.4	17.4	14.0
D: Semi-skilled and unskilled manual workers	19.2	16.9	14.1
E: On state benefit, unemployed, lowest grade workers	12.8	14.4	13.4
	100.0	100.0	100.0

This material is Crown Copyright

The table shows all people aged 16 and over living in households by their approximated social grade. Social Grade is the socio-economic classification used by the Market Research and Marketing Industries, most often in the analysis of spending habits and consumer attitudes. Although it is not possible to allocate Social Grade precisely from information collected by the 2001 Census, the Market Research Society has developed a method for using Census information to provide a good approximation of Social Grade. Persons are classified by the approximated Social Grade of their Household Reference Person (HRP) which is based on occupation. For households where the HRP is not aged 16-74 the Social Grade of the HRP, and all persons in the household, has been estimated using household tenure.

#### **Industry of Employment (UV34)**

The percentage of residents by industry type in general reflects that for the Borough and the South East region.

	Dartford Town Centre	Dartford Borough	South East Region
All People	3403	42255	3888756
A. Agriculture, hunting and forestry	0.4	0.8	1.4
B. Fishing	0.0	0.0	0.0
C. Mining and quarrying	0.3	0.2	0.2
D. Manufacturing	13.5	13.2	12.1
E. Electricity, gas and water supply	0.4	0.6	0.7
F. Construction	8.6	9.4	7.1
G. Wholesale and retail trade, repairs	17.2	18.7	16.3
H. Hotels and restaurants	3.5	3.1	4.3
I. Transport, storage and communications	9.7	8.7	8.1
J. Financial intermediation	6.9	6.8	5.1
K. Real estate, renting and business activities	12.3	11.9	15.6
L. Public administration and defence, social security	5.6	5.5	5.9
M. Education	6.7	6.4	7.8
N. Health and social work	10.8	10.2	9.8
O. Other community, social and personal service activities	4.3	4.5	5.1
P. Private households with employed persons	0.0	0.1	0.2
Q. Extra-territorial organisations and bodies	0.0	0.0	0.0
	100.0	100.0	100.0

This material is Crown Copyright.

The table shows the usual resident population aged 16 to 74 in employment by the industry they work in. The industry in which a person works is determined by the response to the 2001 Census question asking for a description of the business of the person's employer (or own business if self-employed). The responses were coded to a modified version of the UK Standard Industrial Classification of Economic Activities 1992 – UK SIC (92).

### **Accommodation Type- Household Spaces (UV56)**

The Census data shows that the majority of dwellings within Dartford Town Centre are either houses or bungalows. However, the Town Centre has a much higher proportion of flats, maisonettes or apartments in comparison with Dartford Borough and the South East region. The South East region including Dartford Borough and Dartford Town Centre has very few shared dwellings with over 99.5% being unshared.

	Dartford Town Centre	Dartford Borough	South East Region
All Household Spaces	3056	36028	3401820
In an Unshared Dwelling	99.7	99.9	99.6
In an Unshared Dwelling: House or Bungalow	76.0	81.9	81.2
In an Unshared Dwelling: Flat, Maisonette or Apartment	23.9	17.7	18.1

This material is Crown Copyright.

The table shows all household spaces by the type of accommodation. Accommodation type describes the type of accommodation occupied by an individual household, or if unoccupied, available for an individual household, for example the whole of a terraced house or a flat in a purpose built block of flats.

### **Town Centre Workers**

#### **Method of travel to work – Daytime Population (UV37)**

The census information shows that the majority of the daytime town centre population travel to work by driving a car or van (53%). This is higher than for Dartford Borough or the South East region. Even so, over a fifth (21%) either walk to work or travel by public transport.

	Dartford Town Centre	Dartford Borough	South East Region
All People	10121	66471	5574131
Works mainly at or from home	2.3	4.6	6.9
Underground, metro, light rail or tram	0.4	0.2	0.1
Train	4.4	2.5	1.7
Bus, minibus or coach	6.6	5.4	2.9
Taxi or minicab	0.6	0.5	0.3
Driving a car or van	52.6	45.2	40.4
Passenger in a car or van	5.8	5.2	3.9
Motorcycle, scooter or moped	1.0	0.8	0.7
Bicycle	1.2	0.8	2.1
On foot	10.4	4.8	6.9
Other	0.3	0.3	0.3
Not currently working	14.4	29.8	33.7
	100.0	100.0	100.0

This material is Crown Copyright.

The table shows the daytime population aged 16 to 74 by the method of travel to work. The day-time population is defined for people aged 16 to 74, as those people who live and work in the area (or do not work) and those people who live outside the area and work inside the area. 'No fixed place of work' is counted as if working in the

area. The method of travel to work is for the longest part, by distance, of the usual journey to work. Counts do not include people whose usual residence was outside England and Wales.

### **Age – Workplace Population (UV75)**

The age breakdown of people working in the town centre shows a similar profile to Dartford Borough and the South East region.

	Dartford Town Centre	Dartford Borough	South East Region
All People	8658	46631	3696580
Less than 20 years old	8.2	8.2	5.5
20 to 29 years old	20.1	20.0	19.5
30 to 39 years old	25.2	25.3	25.4
40 to 49 years old	21.9	22.3	23.2
50 to 59 years old	19.3	18.7	20.0
More than 59 years old	5.3	5.4	6.3
	100.0	100.0	100.0

This material is Crown Copyright.

The table shows the workplace population by age. The workplace population is defined as the people aged 16 to 74 who are in employment and whose usual place of work is in the area. People with no fixed place of work are treated the same as people who work mainly from home and are counted as working in their area of residence.